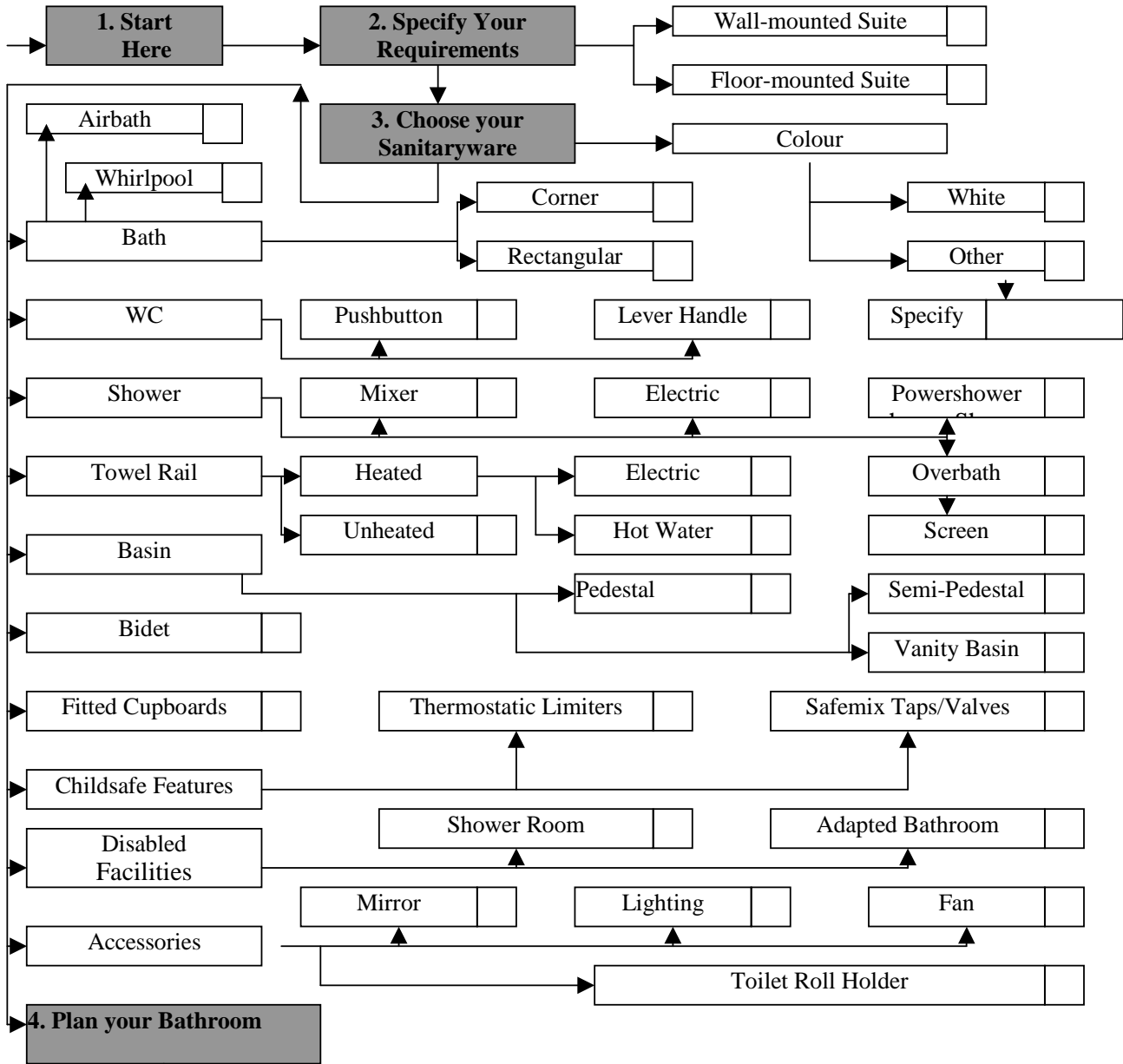


**Instructions:** start at number box 1 and follow arrows and tick square boxes to select different choices.



1	Draw a rough floor plan
2	Measure each wall around the room and enter dimensions to plan.
3	Measure total length and total width and enter on plan
4	Decide where you would like bath/shower first, then WC and lastly basin/vanity.
5	Enter on plan where all existing services are with dotted lines for services under floorboards and lines with direction arrows for above floorboards. Colour them RED for hot, BLUE for cold and BLACK for waste and soil pipes.
6	Measure height of walls and windows for available space for basins, cisterns, showers and towel rails.
7	If fitting a bath it is important to check available width between walls for adequate width for chosen bath i.e. 1.7 metre or 1.5 metre etc.

**5. Place your fittings**

Finally, visit bathroom showrooms and obtain dimensions of possible sanitaryware and compare to available space and dimensions on **your** plan and then let **us** do the rest-Contact **Saddleworth Plumbing Services** for an estimate